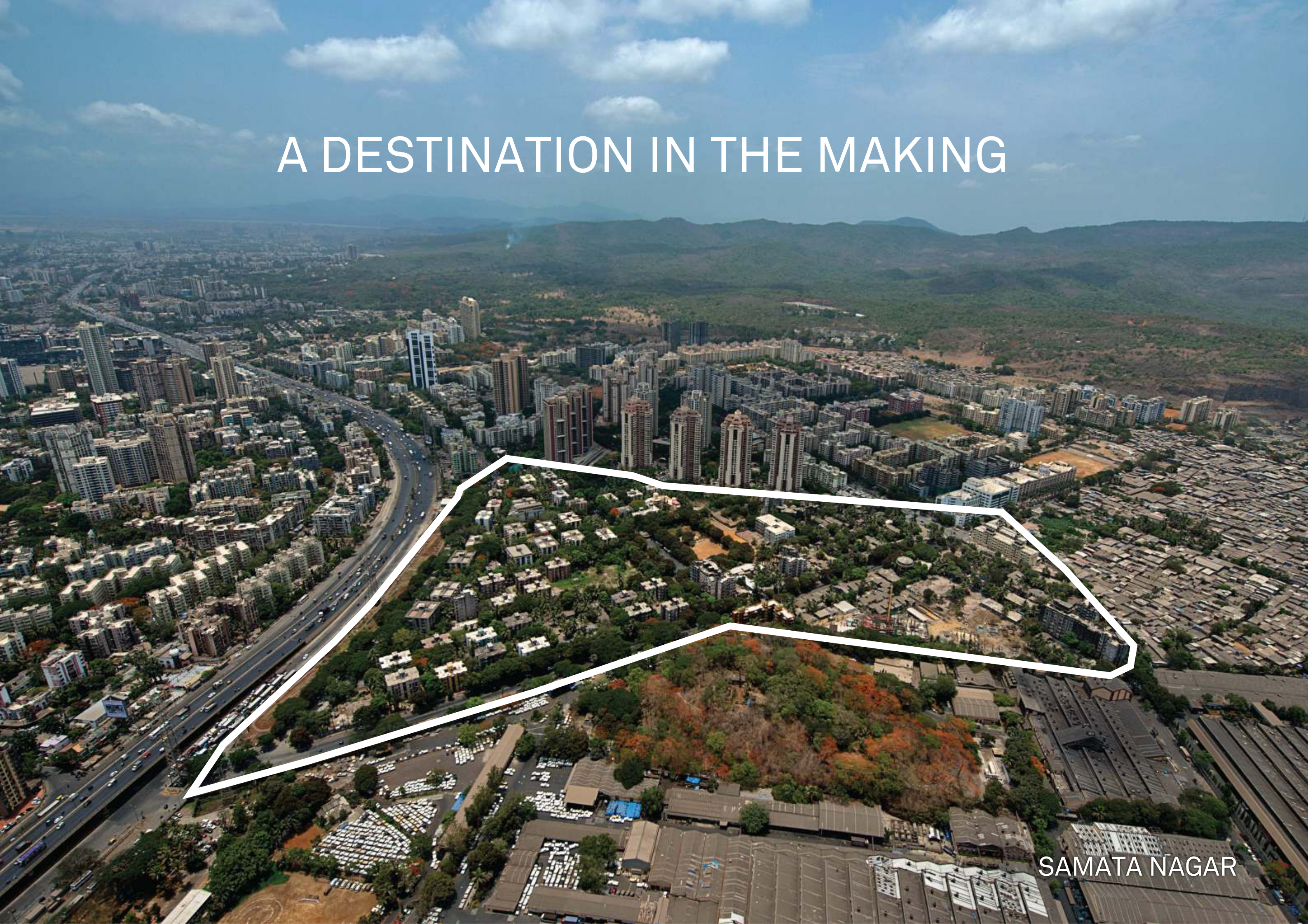


**love  
where  
you  
live**



# A DESTINATION IN THE MAKING

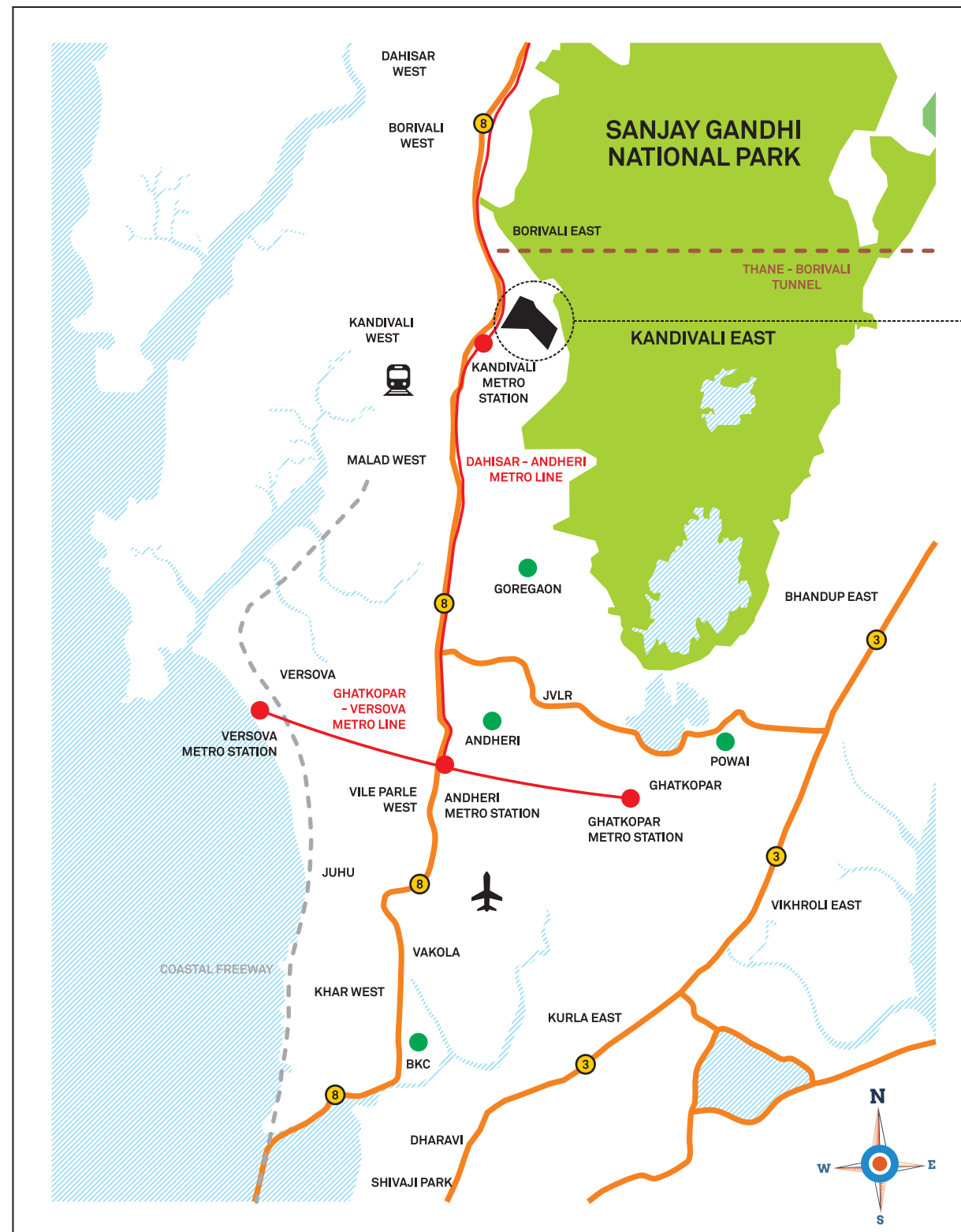


SAMATA NAGAR



# EPSILON TOWER

## BLINK AND YOU ARE THERE



Kandivali is the fastest growing suburb in Mumbai

Unmatched network of railways, roads and highways connecting the entire city (Mulund - Goregaon link road, Malad-Andheri Road, Western Express Highway)

Major developments like Thane-Borivali Tunnel, Dahisar-Andheri Metro Line and Coastal Freeway are going to enhance the connectivity

Its proximity to important commercial centres, like BKC, Goregaon, Powai and Andheri

# EPSILON TOWER

## BIRD'S EYE VIEW





# EPSILON TOWER



- Adjoining the Western Highway
- Excellent Road and Rail Connectivity
- A 30-Minute Drive from the International and Domestic Airport
- Apine
- Epsilon Tower
- Astron Tower

KANDIVALI RAILWAY STATION

UPCOMING METRO STATION

# KANDIVALI EAST



A vision  
so bold, it  
can only be  
expressed  
by wow.

Presenting  
**EPSILON TOWER**

**LIVE IT UP.**





# EPSILON TOWER

Kandivali (E)



# EPSILON TOWER



EPSILON BY NIGHT



# EPSILON TOWER



THE GRAND PAVILION



# EPSILON TOWER

## LIVE IT UP !

The grand podium deck is equipped with the finest amenities that are sure to give you the feeling of being right at home, right where you belong. The podium is conceived by renowned architects in the industry. From a children's play pool to a senior citizens' area, the podium ensures that there is something for everyone.





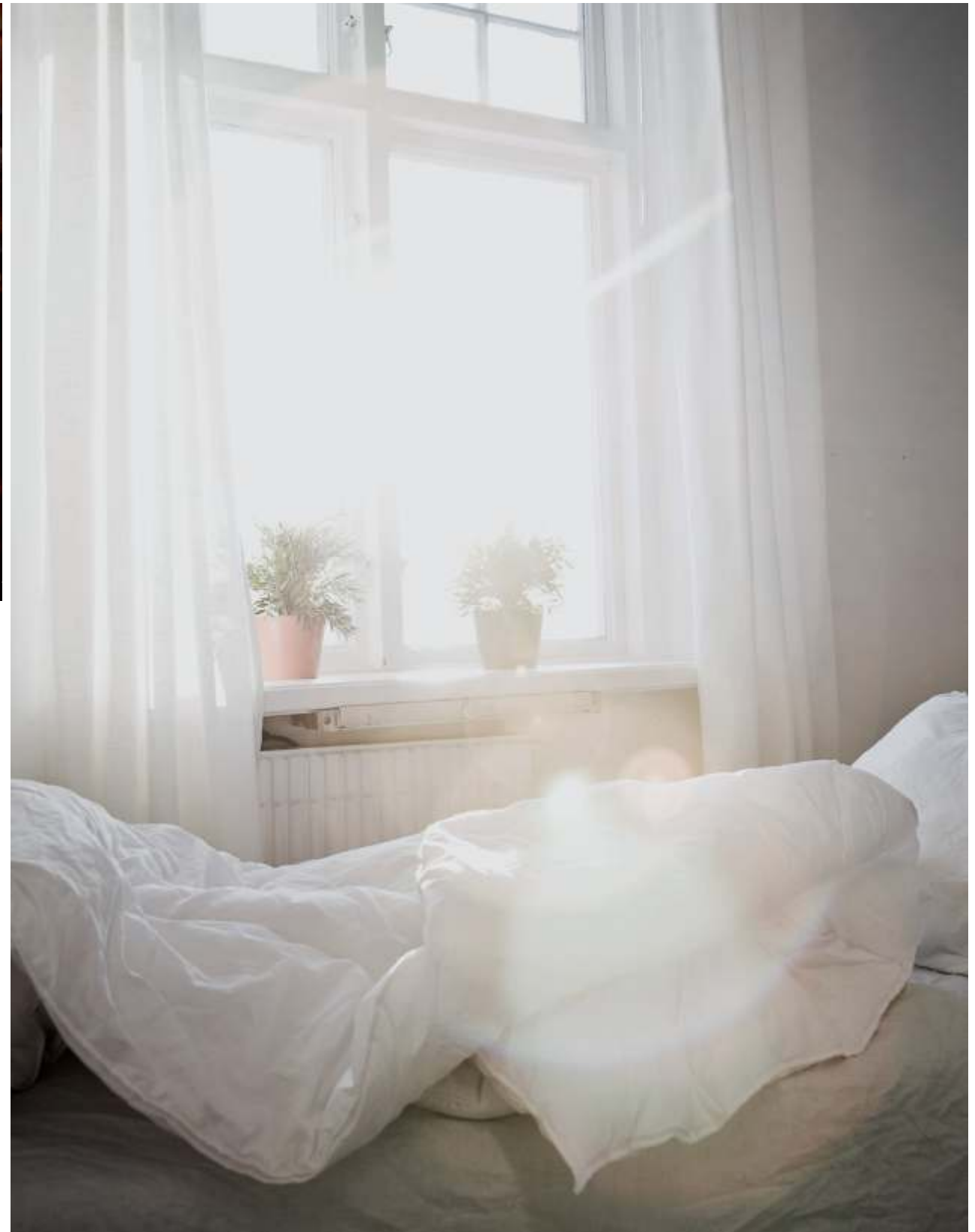
# EPSILON TOWER



Special children's and toddlers' play area, where your kids will always have fun.



Homes with natural ventilation & light.





# EPSILON TOWER



A special corner for the elderly.



Get in shape with access to a fully equipped gymnasium and clubhouse.





PRESENTING

RESERVED APARTMENTS

at **EPSILON TOWER**

SELECTED 2BHK APARTMENTS





# EPSILON TOWER





# EPSILON TOWER





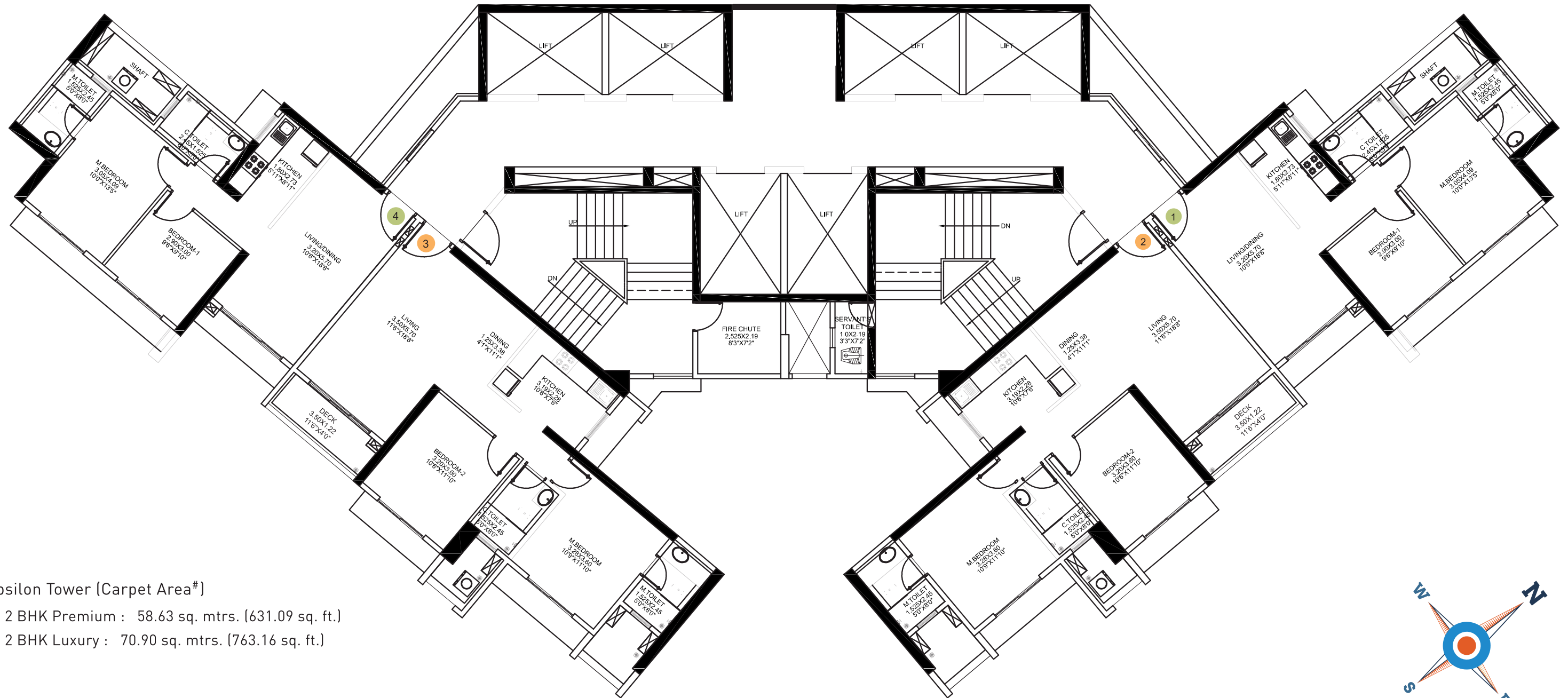
# EPSILON TOWER





# EPSILON TOWER

## PRESENTING RESERVED APARTMENTS AT EPSILON TOWER



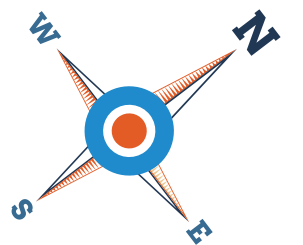
Epsilon Tower (Carpet Area#)

● 2 BHK Premium : 58.63 sq. mtrs. (631.09 sq. ft.)

● 2 BHK Luxury : 70.90 sq. mtrs. (763.16 sq. ft.)

#The Carpet Area is calculated as per Real Estate (Regulation and Development) Act 2016 and shall be at variance from the Carpet area as per the approved plans.

\*27th floor onwards 2 BHK Premium Apartments have a Carpet Area of 59.45 sq. mtrs. (639.91 sq. ft.)

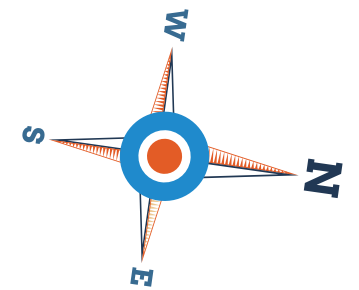
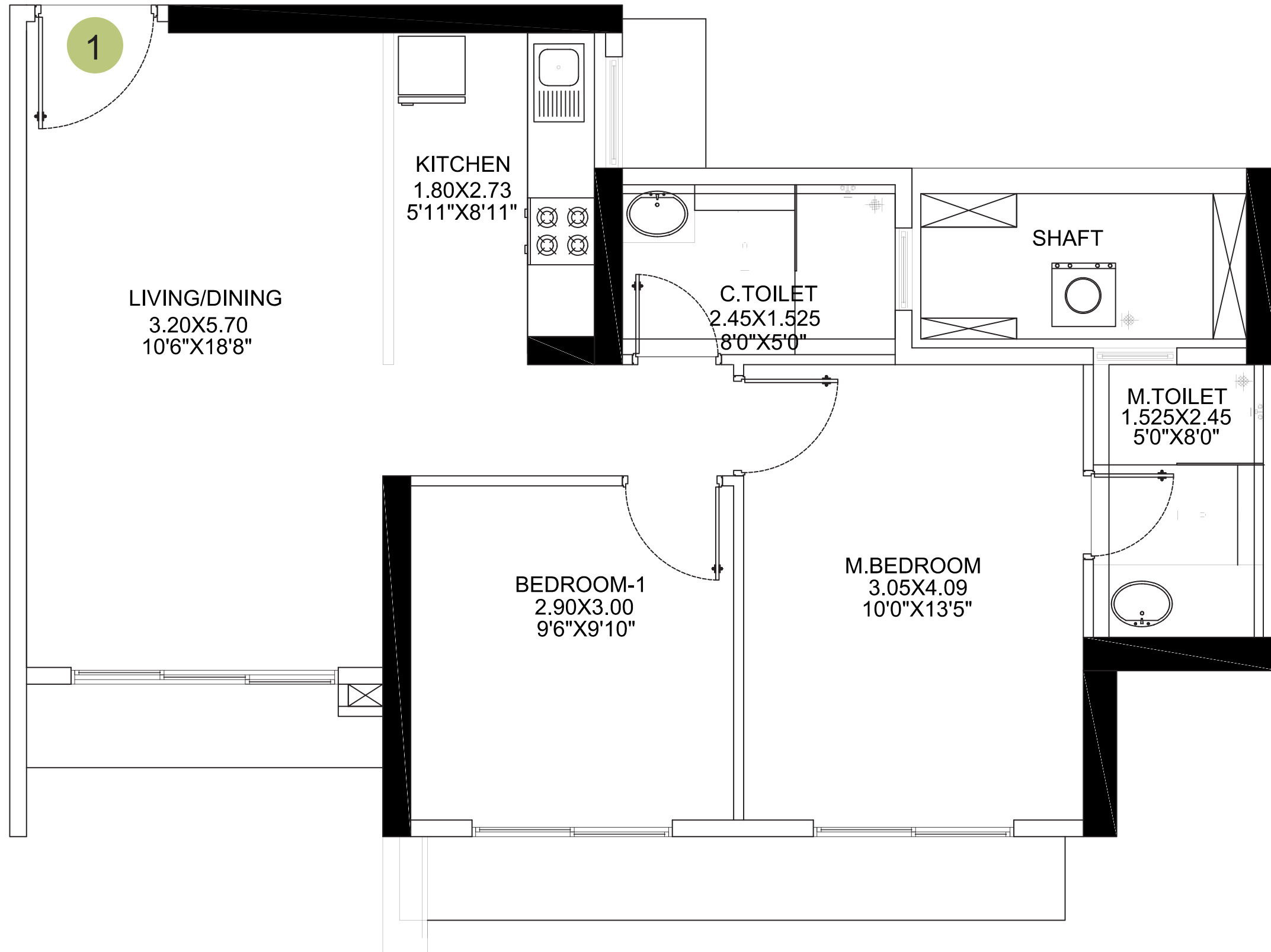




# EPSILON TOWER

## 2 BHK Premium

58.63 sq.mtrs.  
(631.09 sq. ft.)

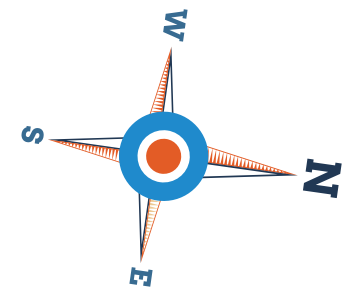
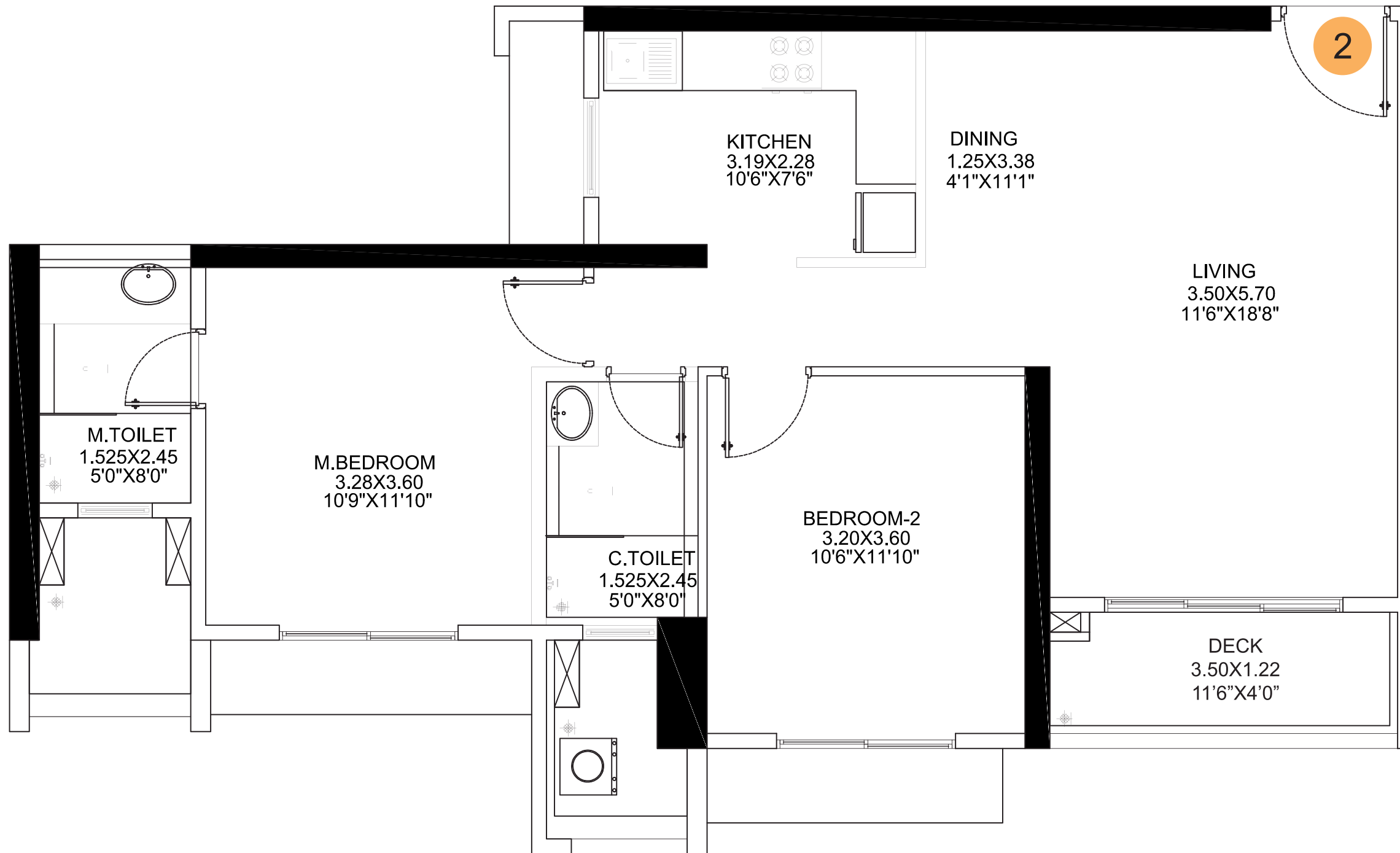




# EPSILON TOWER

*2 BHK Luxury*

70.90 sq. mtrs.  
(763.16 sq. ft.)

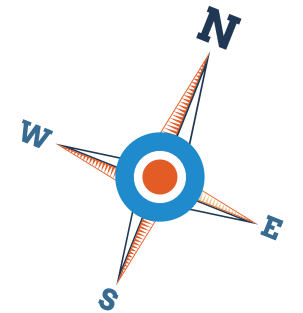
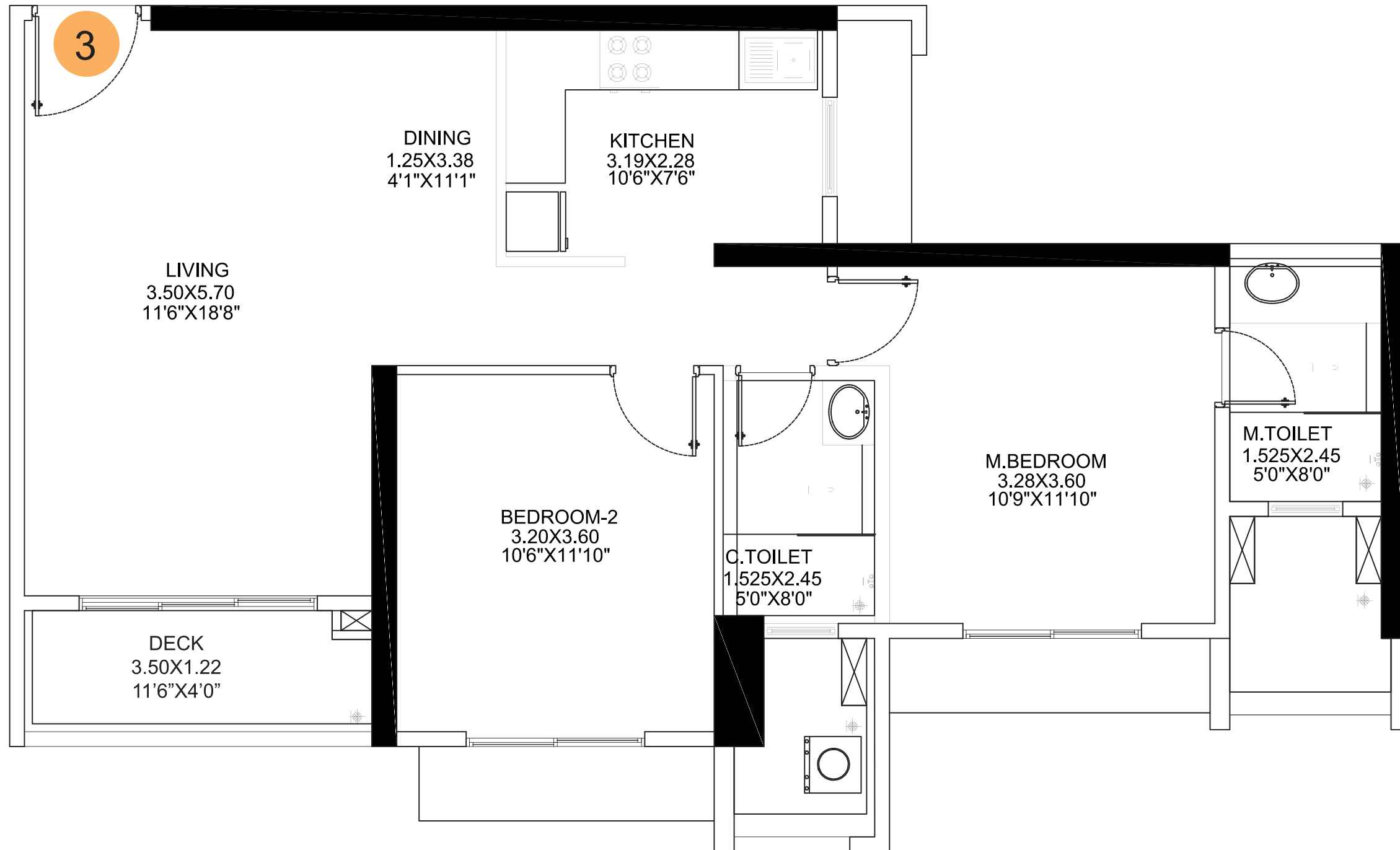




# EPSILON TOWER

*2 BHK Luxury*

70.90 sq. mtrs.  
(763.16 sq. ft.)

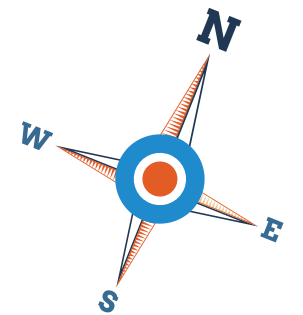
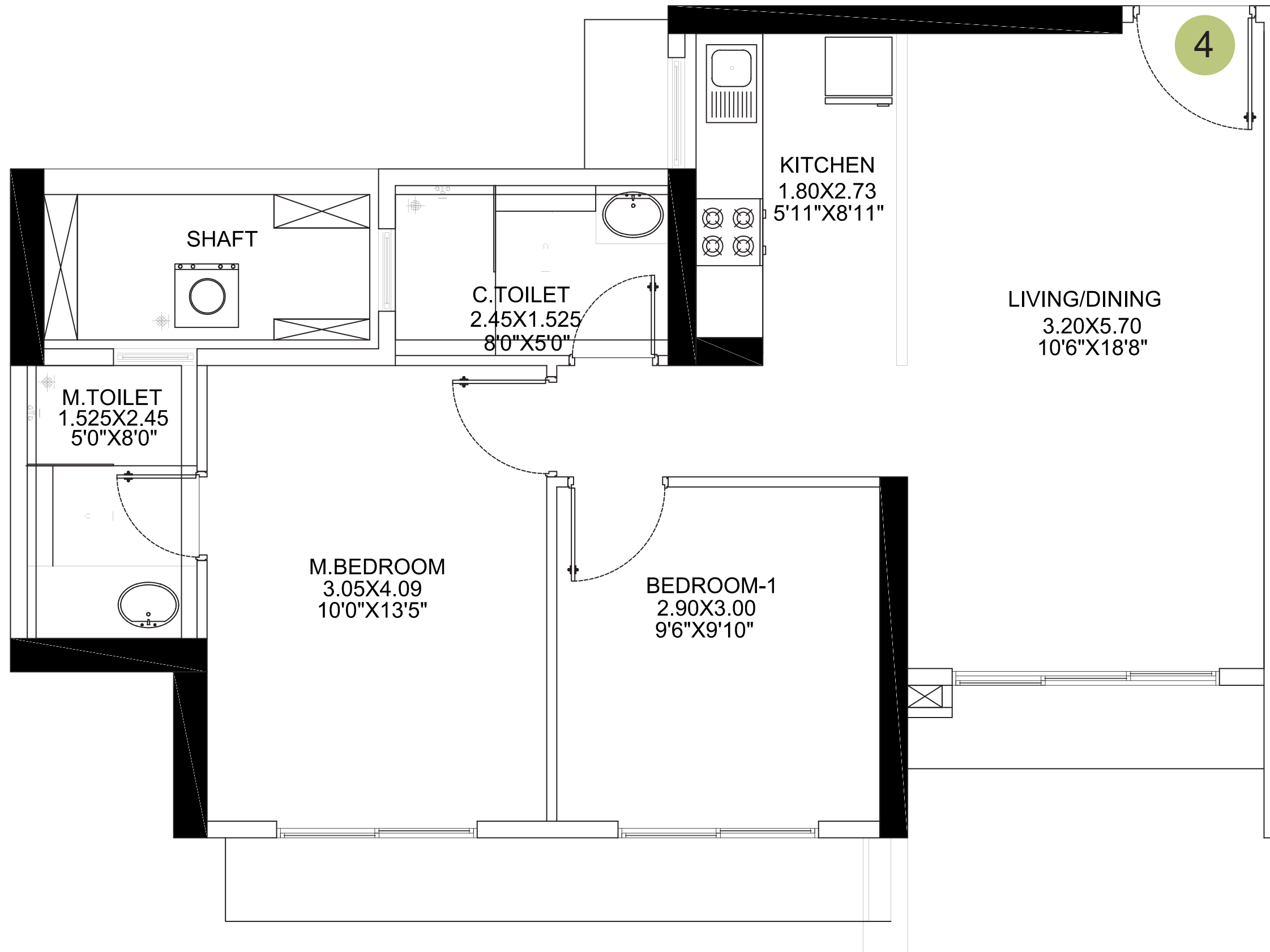




# EPSILON TOWER

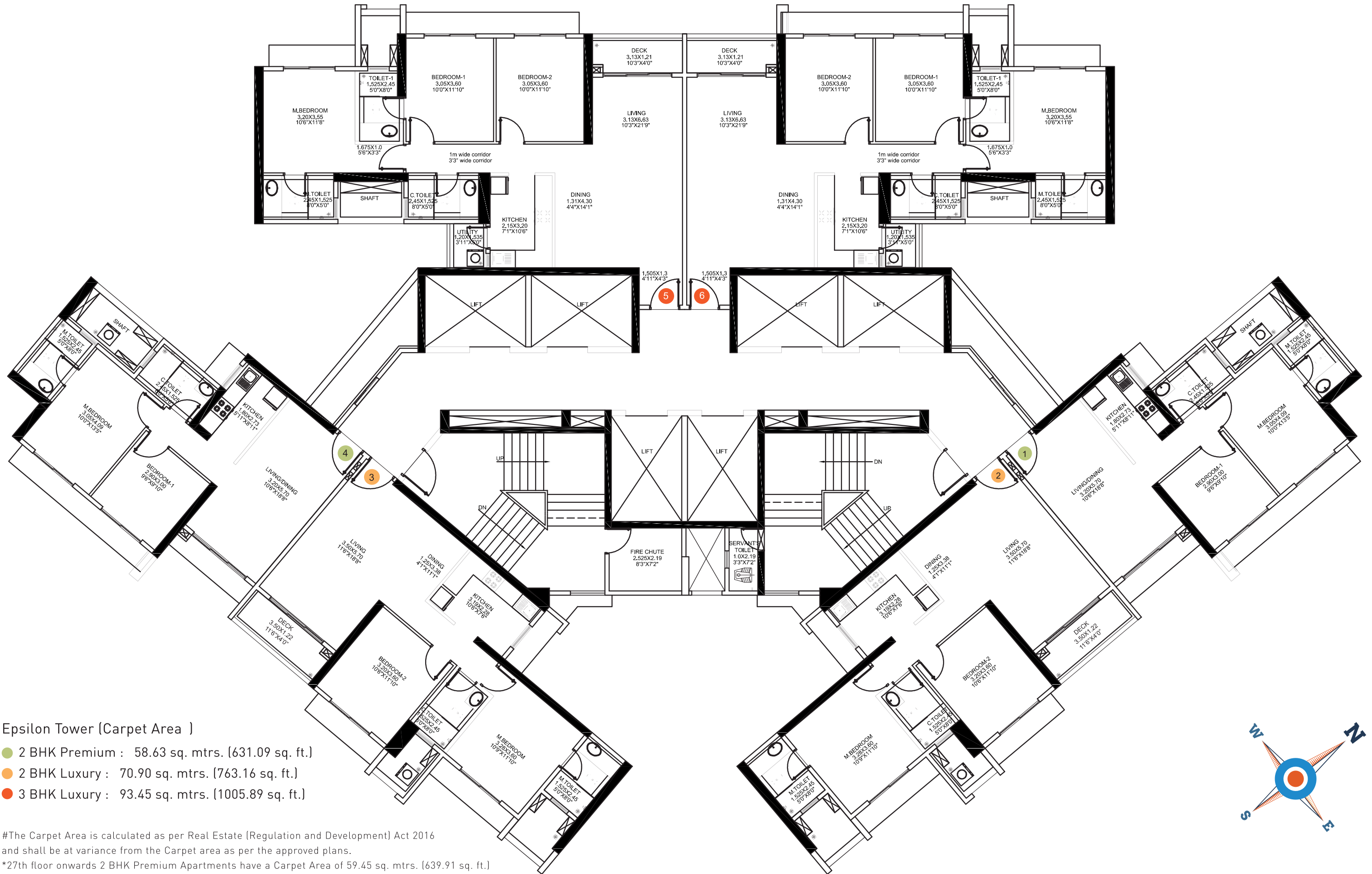
## 2 BHK Premium

58.63 sq.mtrs.  
(631.09 sq. ft.)





# EPSILON TOWER

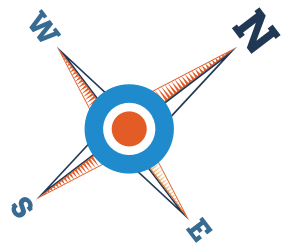


## Epsilon Tower (Carpet Area )

- 2 BHK Premium : 58.63 sq. mtrs. (631.09 sq. ft.)
- 2 BHK Luxury : 70.90 sq. mtrs. (763.16 sq. ft.)
- 3 BHK Luxury : 93.45 sq. mtrs. (1005.89 sq. ft.)

#The Carpet Area is calculated as per Real Estate (Regulation and Development) Act 2016 and shall be at variance from the Carpet area as per the approved plans.

\*27th floor onwards 2 BHK Premium Apartments have a Carpet Area of 59.45 sq. mtrs. (639.91 sq. ft.)

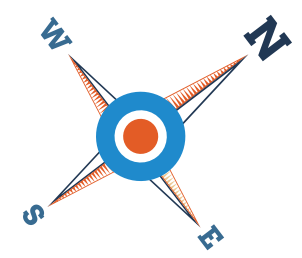
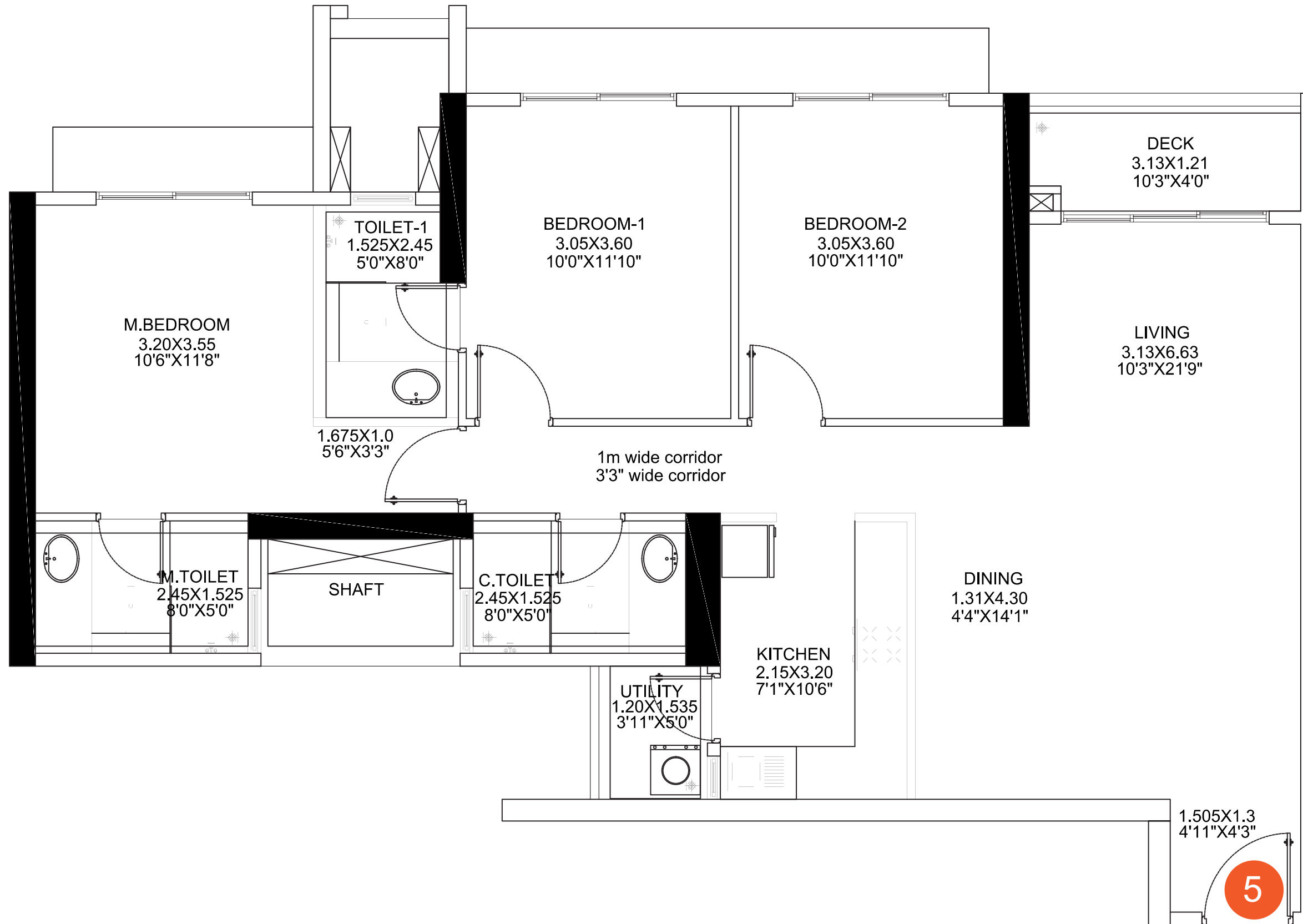




# EPSILON TOWER

*3 BHK Luxury*

58.63 sq.mtrs.  
(631.09 sq. ft.)

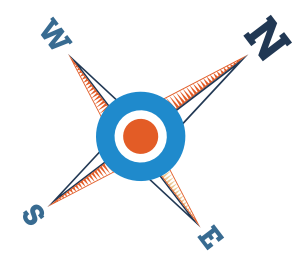
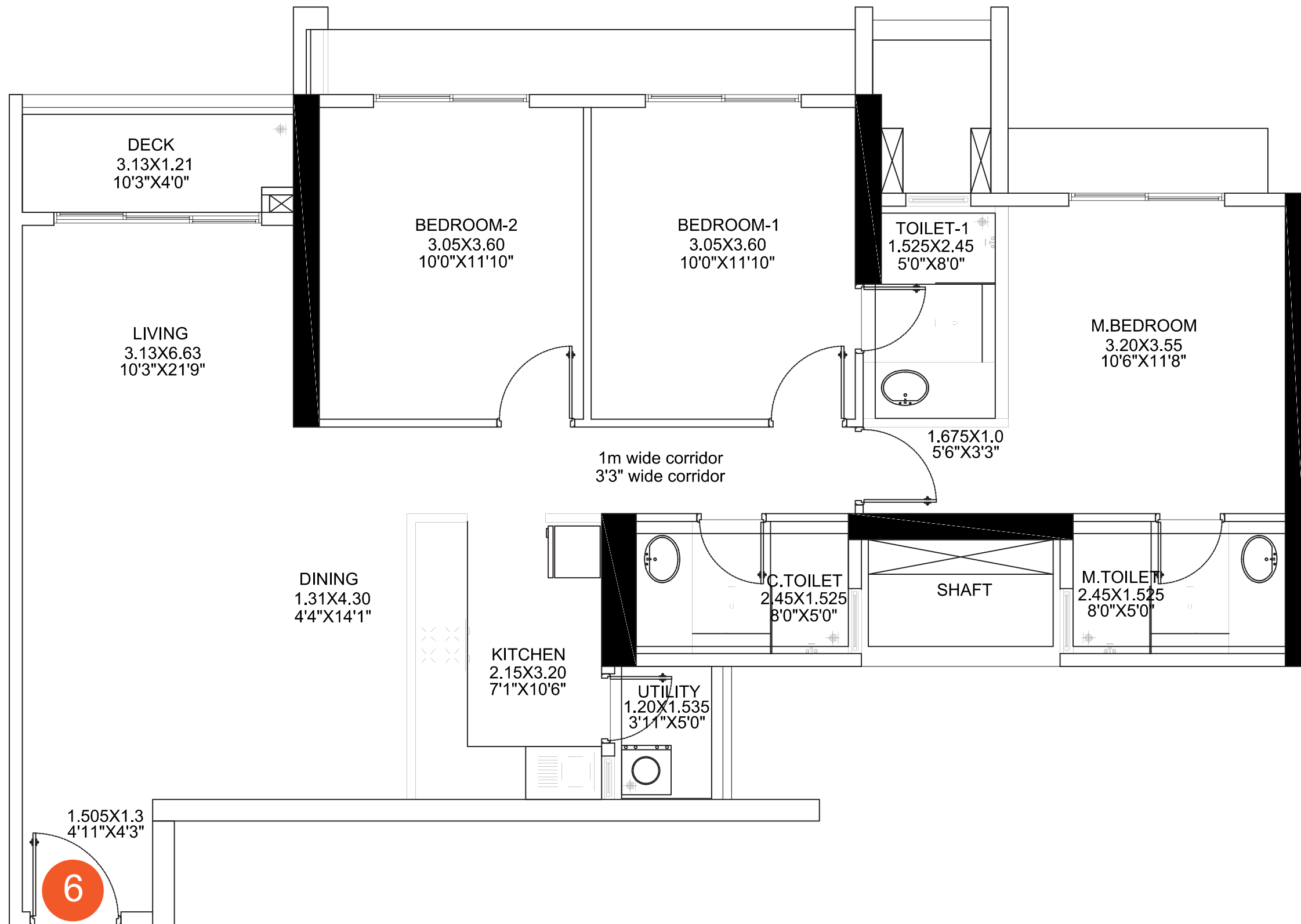




# EPSILON TOWER

*3 BHK Luxury*

93.45 sq. mtrs.  
(1005.89 sq. ft.)





# EPSILON TOWER

MahaRERA Registration No. P51800004355 available at website: <http://maharera.mahaonline.gov.in>



[www.loveepsilon.com](http://www.loveepsilon.com)

Sales office address - Sarova Sales Pavilion, Samata Nagar, Off. Western Express Highway, Kandivali East 400101